

General Info.

ASSA cabinet and desk locks feature our high security U.L. 437 listed cylinders. These versatile locks can be keyed into any ASSA master key system. The cylinder can be easily rekeyed by removing the set screw on the side of the cylinder housing.

Electronic Access Control

Keys & Keying

Mortise Cyls.

Rim Cyls.

Mogul Cyls.

IC Core Cyls.

KIK/KIL Cyls.

Deadbolts

Auxiliary Locks

Padlocks

Profile Cyls.

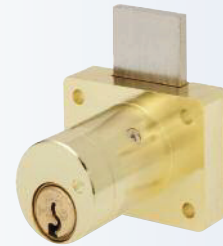
Pin Kits Tools & Accessories

Care & Maint.

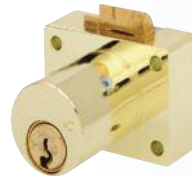
Technical Specs.



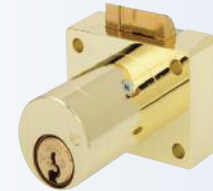
1-3/8" Door Lock



1-3/8" Drawer Lock



7/8" Deadlocking Latch



1-3/8" Deadlocking Latch

Benefits:

- ASSA U.L. 437 high security cylinder
- Setscrew for easy rekeying
- Two independent locking mechanisms to ensure security and optimum pick resistance
- Inactive "false" gates in side pins designed to increase pick resistance

Technical Information:

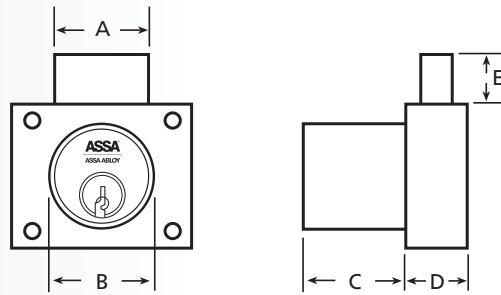
- Available with plastic spacer and strike
- Cabinet lock available with horizontal or vertical bolt and deadlatch
- Desk lock available in 7/8" and 1-3/8" mounting thickness
- Bolt material high quality brass
- Stainless steel top pins
- Bottom pins and master pins are nickel silver

Warranty:

- ASSA warrants its cylinders against defective workmanship or wear resulting from defects for one year

Finishes:

| BHMA Symbol | U.S. Symbol | Description |
|-------------|-------------|--------------|
| 626 | US 26D | Satin Chrome |
| 605 | US 3 | Bright Brass |



| Model# | Notes | Description | A | B | C | D | E |
|--------------------------|-------|--------------------------|-------|-------|-------|-------|-------|
| Maximum + | | | | | | | |
| 98700AS-138 | * | 1-3/8" Door Lock | 1.010 | 1.120 | 1.420 | 0.515 | 0.965 |
| 98800AS-138 | * | 1-3/8" Drawer Lock | | | 1.185 | 0.635 | 0.320 |
| 98850AS-078 | * | 7/8" Deadlocking Latch | | | 1.420 | 0.515 | 0.965 |
| 98850AS-138 | * | 1-3/8" Deadlocking Latch | | | | | |
| Twin Maximum | | | | | | | |
| 88700AS-138 | * | 1-3/8" Door Lock | 1.010 | 1.120 | 1.420 | 0.515 | 0.965 |
| 88800AS-138 | * | 1-3/8" Drawer Lock | | | 1.185 | 0.635 | 0.320 |
| 88850AS-078 | * | 7/8" Deadlocking Latch | | | 1.420 | 0.515 | 0.965 |
| 88850AS-138 | * | 1-3/8" Deadlocking Latch | | | | | |
| Twin Exclusive | | | | | | | |
| E700AS-138 | * | 1-3/8" Door Lock | 1.010 | 1.120 | 1.420 | 0.515 | 0.965 |
| E800AS-138 | * | 1-3/8" Drawer Lock | | | 1.185 | 0.635 | 0.320 |
| E850AS-078 | * | 7/8" Deadlocking Latch | | | 1.420 | 0.515 | 0.965 |
| E850AS-138 | * | 1-3/8" Deadlocking Latch | | | | | |
| Twin 6000 Classic | | | | | | | |
| 700AS-138 | * | 1-3/8" Door Lock | 1.010 | 1.120 | 1.420 | 0.515 | 0.965 |
| 800AS-138 | * | 1-3/8" Drawer Lock | | | 1.185 | 0.635 | 0.320 |
| 850AS-078 | * | 7/8" Deadlocking Latch | | | 1.420 | 0.515 | 0.965 |
| 850AS-138 | * | 1-3/8" Deadlocking Latch | | | | | |
| Twin V-10 | | | | | | | |
| V700AS-138 | * | 1-3/8" Door Lock | 1.010 | 1.120 | 1.420 | 0.515 | 0.965 |
| V800AS-138 | * | 1-3/8" Drawer Lock | | | 1.185 | 0.635 | 0.320 |
| V850AS-078 | * | 7/8" Deadlocking Latch | | | 1.420 | 0.515 | 0.965 |
| V850AS-138 | * | 1-3/8" Deadlocking Latch | | | | | |
| Twin Pro | | | | | | | |
| 61700AS-138 | * | 1-3/8" Door Lock | 1.010 | 1.120 | 1.420 | 0.515 | 0.965 |
| 61800AS-138 | * | 1-3/8" Drawer Lock | | | 1.185 | 0.635 | 0.320 |
| 61850AS-078 | * | 7/8" Deadlocking Latch | | | 1.420 | 0.515 | 0.965 |
| 61850AS-138 | * | 1-3/8" Deadlocking Latch | | | | | |

– Twin Maximum available with CLIQ™ Technology, Example: 88700AS-138 x CLIQ x 626 x Sidebar x Comp

* Indicate product finish, Cabinet locks are available in 605 & 626 only.